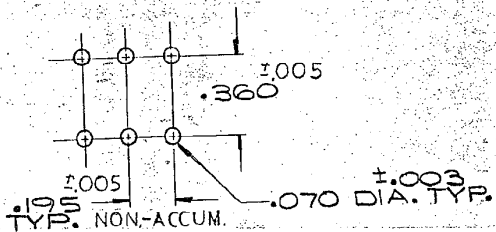
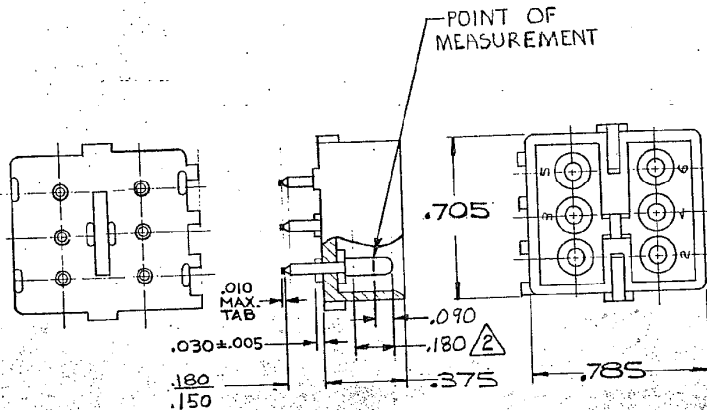


- PARTS COMPLY WITH TE SOLDERABILITY SPEC. NO. 109-11-3
- CONTACT IS PLATED OVERALL WITH .000050 NICKEL, THEN .000030 GOLD OVER CONTACT LENGTH INDICATED AND TIN PLATED ON SOLDER TAIL END.
- DIMENSION SHOWN REPRESENT PRODUCT IN DRY CONDITION. ADDITIONAL 2% GROWTH DUE TO END USE LOCATION MOISTURE ABSORPTION MAY OCCUR AND SHOULD BE ACCOUNTED FOR.



RECOMMENDED LAYOUT FOR .062 THICK P.C. BOARD

SUPERSEDED BY 2-1586546-0

1-380999-0	NYLON	NATURAL	COPPER ALLOY GOLD
ASSEMBLY NO.	HSG. MATL.	COLOR	PIN MATL. FINISH

REVISION RECORD				NUMBER	DWG. SIZE	NUMBER	NAME	REMARKS	ITEM NO.
U4	REVISED PER ECR-21-117185	PJ	VS	28000					
U3	REVISED PER ECR-18-008156	JB	DZ	28000					
U2	REVISED PER ECR-13-008342	AV	RP	28000					
U1	REVISED PER ECO-11-005294	RK	HMR	28000					
LTR	REVISION RECORD	DR	CHK	D/JE					
DESCRIPTION				380999					
DR									
CHK									
DE									
APP									
MATERIAL AND FINISH				DR					
WIRE - RANGE - INSULATION				CHK					
TOLERANCE EXCEPT AS NOTED				DE					
SCALE				APP					
LOC									
NO									
NAME									
TYPE									

CUSTOMER COPY REFERENCE ONLY

TE Connectivity

PIN HEADER

CM B 380999

CIRCUIT MATE-N-LOK P.C. BOARD HEADER

DIMENSIONS IN INCHES. DO NOT SCALE PRINT.

Mouser Electronics

Authorized Distributor

Click to View Pricing, Inventory, Delivery & Lifecycle Information:

[TE Connectivity:](#)

[1-380999-0](#)